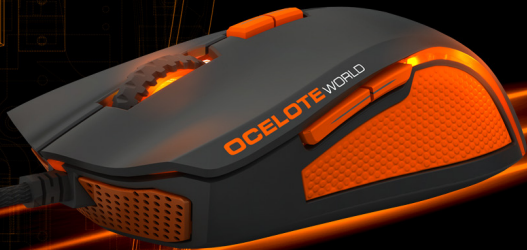


ozone

# ARGON OCELOTE

WORLD



USER MANUAL

## SYSTEM REQUIREMENTS

### 1. Operation System

Windows XP / Windows Vista / Windows 7 / Windows 8 / Windows 8.1

### 2. Free **USB** 1.1/ 2.0 port

### 3. **CD-ROM** drive

### 4. **50 MB** free hard disk space

## INSTALLATION INSTRUCTIONS

### 1. Plug USB connector of ARGON OCELOTE to a USB port of your PC

### 2. Download the driver from [www.ozonegaming.com](http://www.ozonegaming.com)

### 3. Double click "Setup.exe" to start the installation program.

Click "Next" to continue

### 4. Select the folder to save the driver and click "Next" to continue

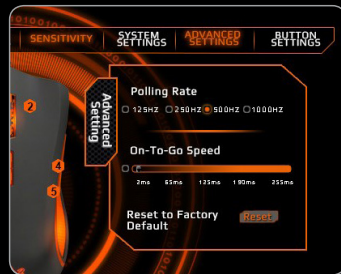
### 5. Installation run automatically; click "Finish" to complete the installation

## FOR MAXIMUM PERFORMANCE

### 1. Open the **Driver v1.1** by clicking on the ozone icon on the dock or in your program's folder.

### 2. Once the driver is open click on **ADVANCED SETTINGS**.

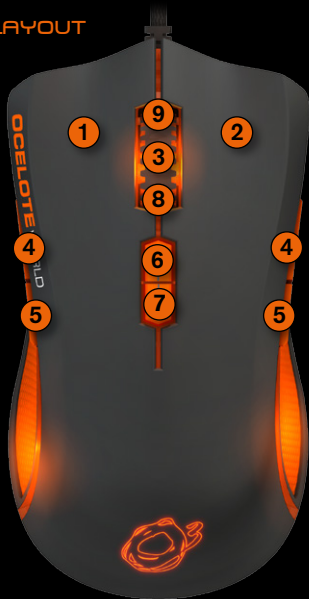
### 3. Click on the **RESET** Button to Reset to factory Default.



### 4. Click **OK**.



## BUTTONS LAYOUT



## DEFAULT BUTTON ASSIGNMENT

- 1 - Click
- 2 - Menu
- 3 - Wheel Click
- 4 - IE Forward
- 5 - IE Backward
- 6 - CPI Up
- 7 - CPI Down
- 8 - Scroll Down
- 9 - Scroll Up

## LEFT/RIGHT HAND USER SWAP

Via Software; search for **BUTTON SETTINGS** and choose from Hand Selection:

Hand Selection  
☒ RIGHT ☐ LEFT

(install the driver to assign different functions to each button)

## MOUSE CONFIGURATION



ARGON OCELOTE DRIVER

## 1. ADVANCED SETTINGS:

1. Polling Rate Setting
2. On-To-Go Speed Setting, Speed of repeat mouse function (refer to 2.6 **Mouse Function**)
3. Reset to Factory Default: In the pop-up window, click **"OK"** to **APPLY** the change



## 2. BUTTON SETTINGS:

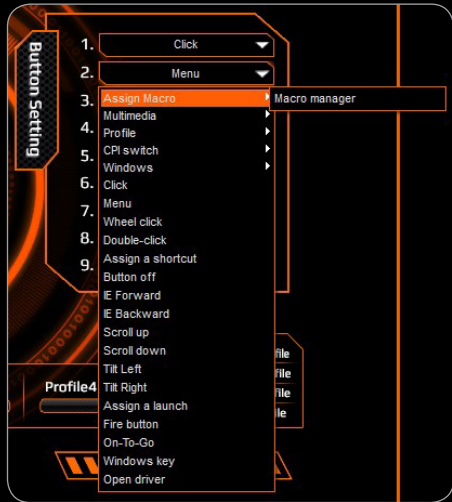


## 1. MACRO MANAGER

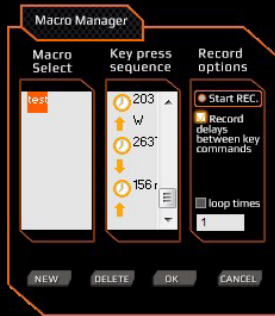
Macro is a series of desired keystrokes which can be recorded and assigned to the keyboard. In other words, it's a series of key press and releases, in which every pressed keystrokes, released keystrokes, and delays are been recorded. The delay is the duration between the keys "press and release" or "release and press", that is automatically recorded and output once the macro is assigned.

## Create and Assign a Macro

1. Select a button and click "Macro Manager" from the menu

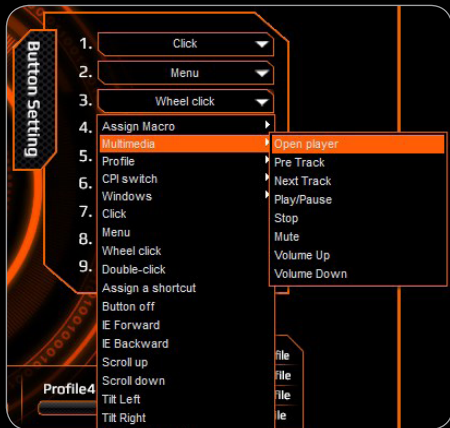


2. In the pop-up window, click "NEW" and enter a name for the macro, then start to create the macro
3. Select the options of "Record Delays" and set the "Loop Times" from the right column if needed
4. Click "Start Record" type the desired key combination and click "Stop Record" when you are finished. If needed "Right Click" on one of the keys in the sequence to edit it. Click "OK" to continue
5. Assign a created "Macro" to a "Button" and click "**APPLY**" to complete the setting



## 2. MULTIMEDIA

1. Select a button and click "Multimedia" from the menu
2. Select the desired function in the sub-menu and click **"APPLY"** to confirm the setting



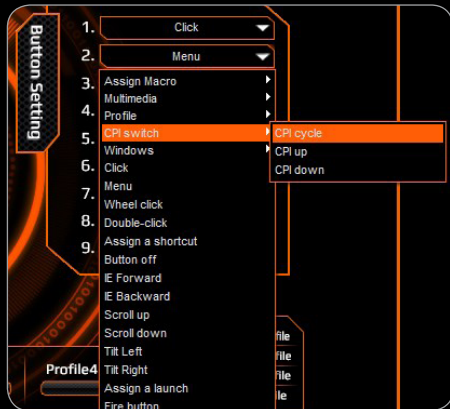
## 3. PROFILE SWITCHING

1. Select a button and click "Profile" from the menu
2. Select the desired function in the sub-menu and click **"APPLY"** to confirm the setting. Profile Cycle: Cycle Switching / Profile Up: Profile + / Profile Down: Profile -



## 4. CPI/DPI SWITCHING

1. Select a button and click "CPI Switch" from the menu
2. Select the desired function in the sub-menu and click "**APPLY**" to confirm the setting. CPI Cycle: Cycle Switching / CPI Up: DPI level + / CPI Down: DPI level -



## 5. WINDOWS MANAGEMENT

1. Select a button and click "Windows" from the menu
2. Select the desired function in the sub-menu and click "**APPLY**" to confirm the setting





## 6. MOUSE FUNCTIONS

1. Select a button and click the desired mouse function in the menu: **"Click"**, **"Menu"**, **"Wheel Click"**, **"Double-click"**, **"IE Forward"**, **"IE Backward"**, **"Scroll Up"**, **"Scroll Down"**, **"Tilt Left"**, **"Tilt Right"**, **"Fire Button"**, **"On-To-Go"** (This is a combination button used to get a continuous mouse function: Hold down this button together with any other button with an assigned mouse function to get a continuous repeated mouse function)".
2. Then, click **"APPLY"** to confirm the setting



## 7. ASSIGN A SHORTCUT

Single mouse click to activate a combination of keys which used often

1. Select a button and click **"Assign a Shortcut"** from the menu
2. Select and enter the desired combination of keys from the pop-up window and click **"OK"** to continue
3. Click **"APPLY"** to complete the setting.



Ex. now the "Ctrl" + "V" will be executed

## 8. BUTTON OFF: DISABLE THE BUTTON FUNCTION

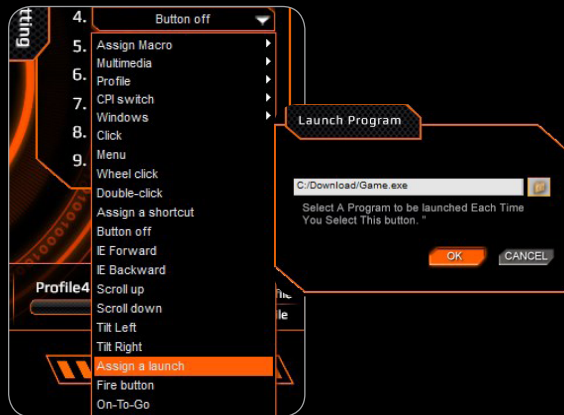
1. Select a button and click "**Button Off**" from the menu
2. Then, click "**APPLY**" to confirm the setting



## 9. ASSIGN A LAUNCH

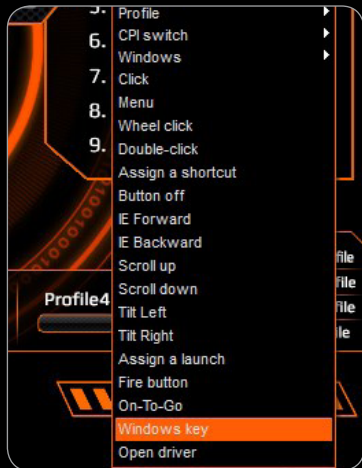
Single mouse click to launch your chosen PC software

1. Select a button and click "**Assign a Launch**" from the menu
2. In the pop-up window, select the desired software from the folder and click "**OK**" to continue
3. Click "**APPLY**" to complete the setting



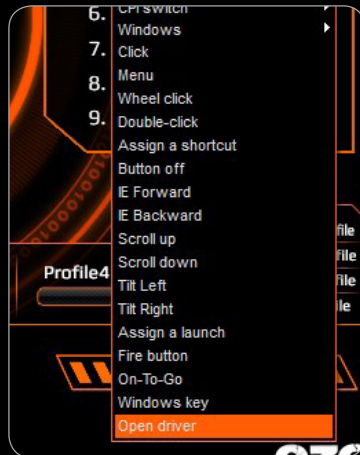
## 10. WINDOWS KEY

1. Select a button and click "**Windows Key**" from the menu
2. Then, click "**APPLY**" to confirm the setting



## 11. OPEN DRIVER

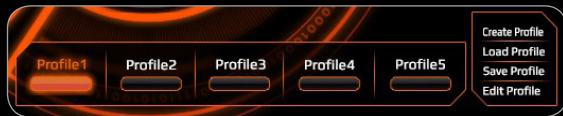
1. Select a button and click "**Open Driver**" from the menu for quick access to the Mouse Configuration Driver
2. Then, click "**APPLY**" to confirm the setting



### 3. PROFILE SETTING

Each configuration profile corresponds to a personalized mouse setting. Therefore, this powerful feature allows you to **create specific configuration profiles for each game**.

The defined configuration profile can be saved on your PC (we strongly suggest that you name the configuration file according to the name of the related game). The driver provides 5 profiles: Profile 1 to Profile 5. The default path of the saved configurations is in the “*Config*” folder under the “*Driver Installation Directory*”, in which you can find the 5 corresponding files for the 5 profiles on the main skin.



On the right hand side of the Profile buttons you will find the following options: “**Create Profile**”, “**Load Profile**”, “**Save Profile**”, and “**Edit Profile**” used to set up your personalized configurations. You can create a variety of configurations and save them for future use. Even if you change to a different computer, you don’t have to repeat the process because **you can easily import your previously saved configurations**.

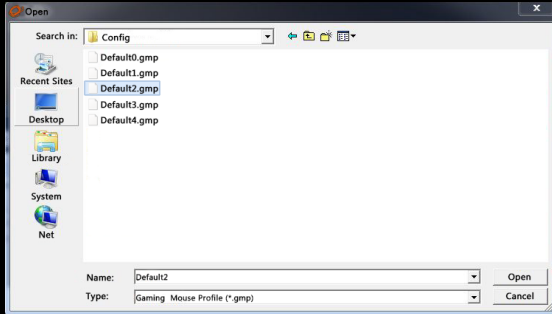
### 1. CREATE PROFILE

1. Click “**Create Profile**” to create a personalized PROFILE NAME and PATH to EXECUTE the GAME (setup the Game which will be connected to the profile, then when you execute the Game the driver will select the correct Profile for that specific Game)
2. Click “**OK**” to confirm the changes
3. Click “**APPLY**” to **APPLY** the changes



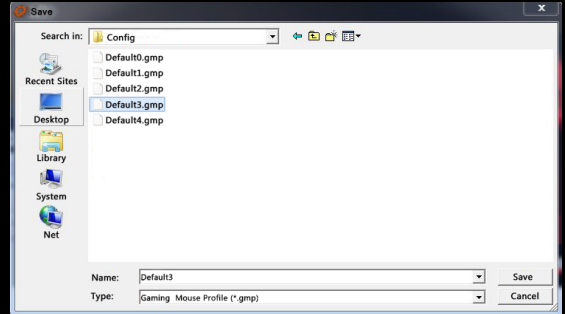
## 2. LOAD PROFILE

1. Click "**Load Profile**" to execute a previous setting of a certain profile
2. Select the profile to be imported and click "**Open**" in the pop-up window
3. Click "**APPLY**" to apply the changes



## 3. SAVE PROFILE

1. Select the profile that you want to save and click "**Save Profile**"
2. In the pop-up window, give a personalized name to the profile and click "**Save**"
3. Click "**APPLY**" to apply the changes



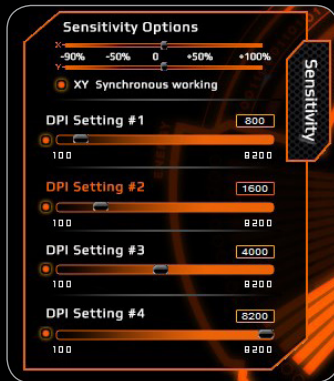
## 4. EDIT PROFILE

1. Click **"Edit Profile"** to modify your personalized PROFILE NAME and EXECUTABLE GAME PATH
2. Click **"OK"** to confirm the changes
3. Click **"APPLY"** to apply the changes



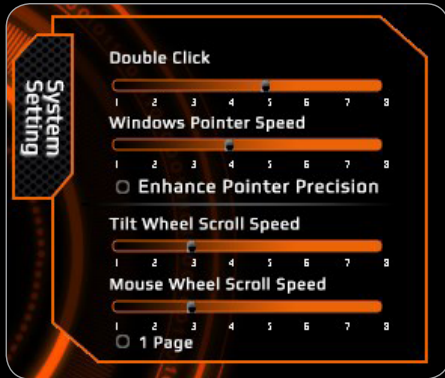
## 4. SENSITIVITY SETTING

1. Horizontal X and vertical Y - direction moving speed settings
2. Click on **"XY synchronous working"** for a synchronous direction moving option
3. **DPI Settings:** Click on **"Orange Circle"** for DPI lock / Set your personalized DPI using the sliding Bar
4. Click **"APPLY"** to confirm the settings



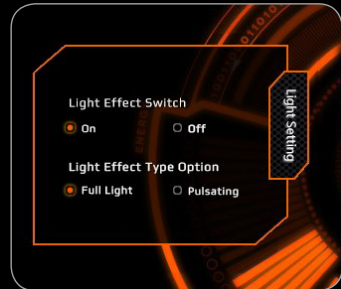
## 5. SYSTEM SETTINGS

1. Double Click Speed Settings
2. Windows Pointer Speed & Precision Settings
3. Tilt Wheel Scroll Speed Settings
4. Mouse Wheel Scroll Speed Settings & Scroll by single page
5. Click **"APPLY"** to confirm the settings



## 6. LIGHT SETTINGS

1. Choose the Light Effects and Breathing Mode of LED lights
2. Click **"APPLY"** to confirm the settings





*it's all about evolution*

---

©2014 OZONE Gaming Gear. All rights reserved.